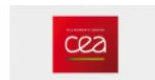


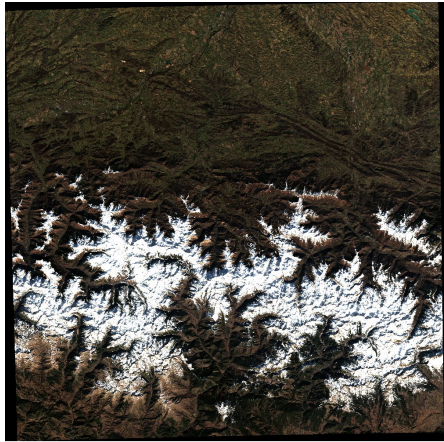
# PRODUITS NEIGE

## DESCRIPTION / ACCÈS / UTILISATION

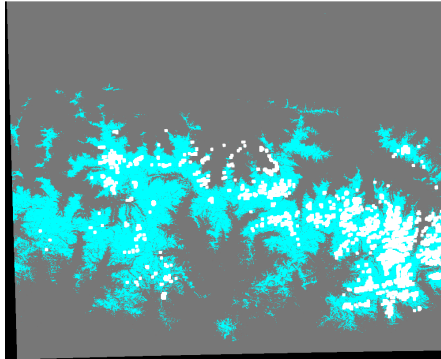


# Let\_it\_snow (LIS) products ([https://gitlab.orfeo-toolbox.org/remote\\_modules/let-it-snow](https://gitlab.orfeo-toolbox.org/remote_modules/let-it-snow))

Landsat 8  
Sentinel 2



Snow coverage (MSK)



Fractional Snow Coverage (FSC)

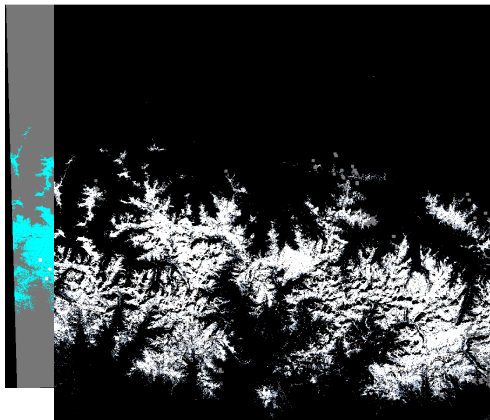
Only for Sentinel 2

**AND  
/ OR**



Snow products

MSK and/or FSC

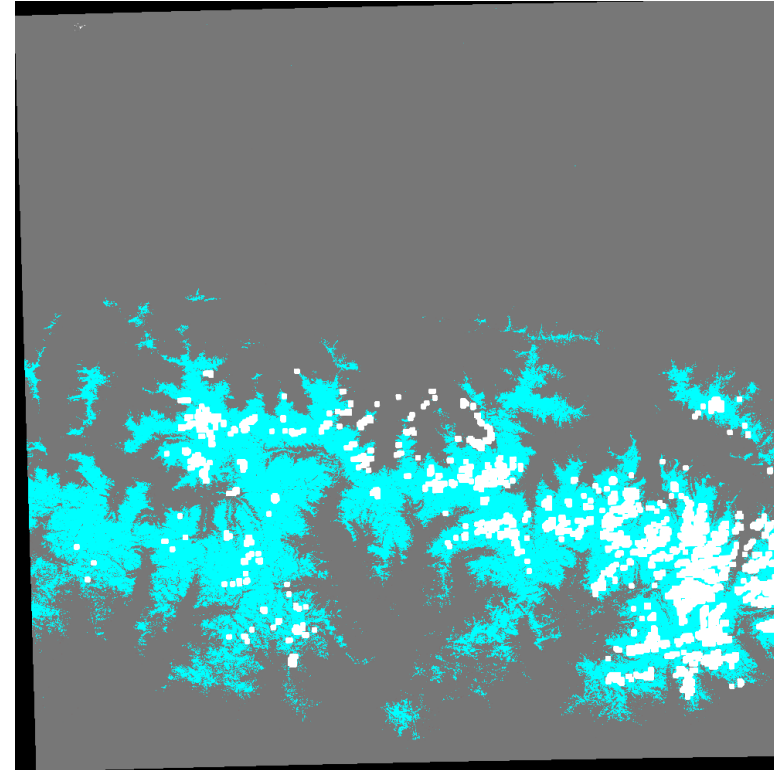
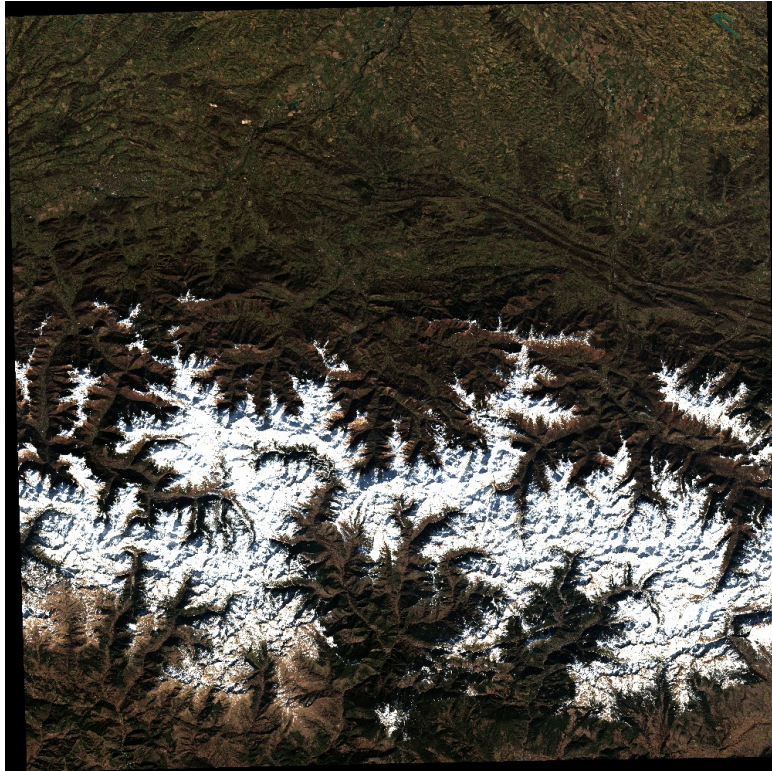


Synthesis  
(monthly, yearly)



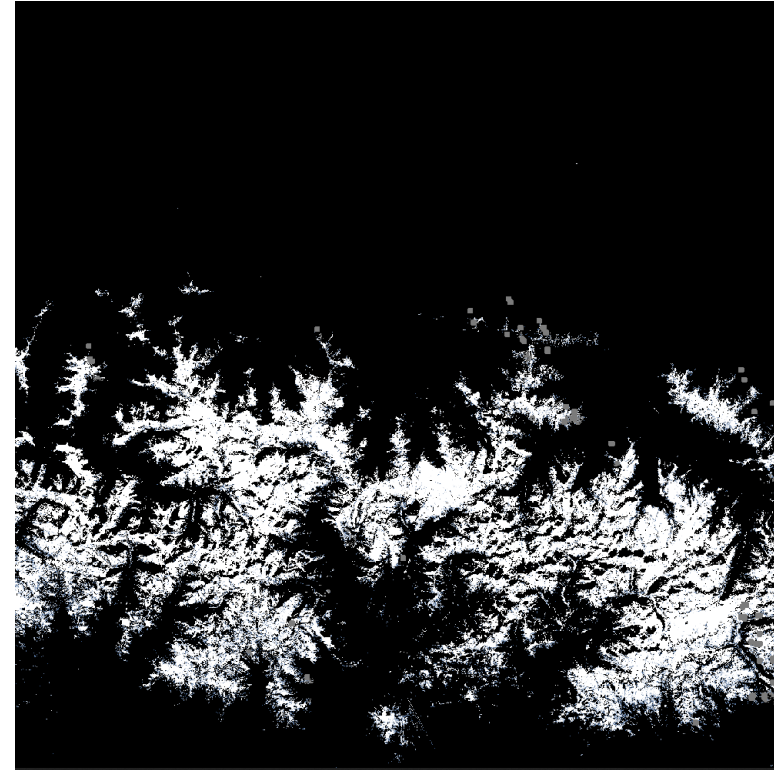
SCD - Snow cover duration  
SOD - Snow onset date  
SMOD - Snow melt-out date  
NOBS - Number of observations

## ❑ Snow coverage description (MSK)



- 0 - No-snow
- 100 - Snow
- 205 - Cloud including cloud shadow
- 255 - No data

## ❑ Fractional Snow coverage description (FSC)

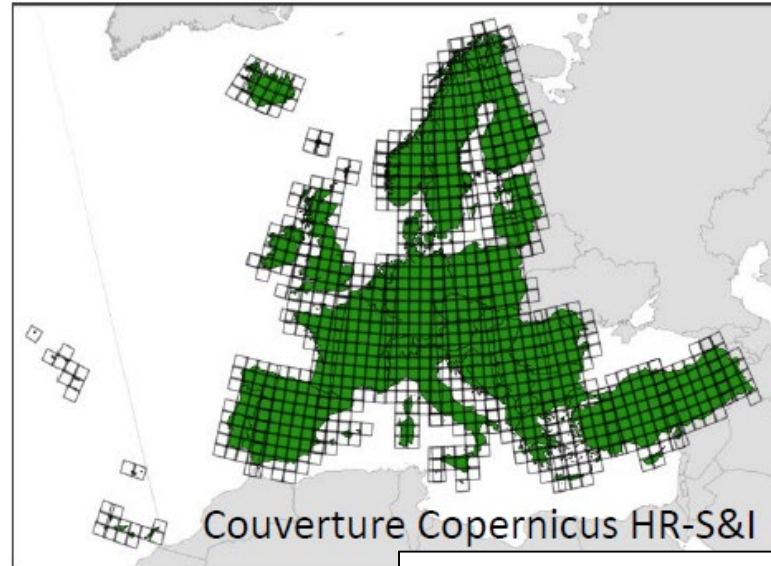


- 0 - No-snow
- [1 – 100] - Snow fraction
- 205 - Cloud including cloud shadow
- 255 - No data

## □ LIS products on platforms



- Theia map
- Snow coverage
  - Synthesis



- Copernicus map
- FSC

- Hydroweb.next
- FSC
  - Synthesis

## ❑ Access to snow product on Theia

➤ [Démo](#)

## ❑ Access to snow product on Copernicus Land Service HR S&I

➤ [Démo](#)